



HILLSIDE FARM at WEST MOUNTAIN PRESERVE Trail Assignments Map

Legend

- Hiking Only
- Picnic Area
- Boardwalk
- Parking
- Contour Lines
- 20 ft Intervals
- Field/ Farmland
- Forest
- Water
- Hillside Loop- 0.39 mi

NOTE: Trails may be periodically closed due to their conditions or to protect plants and wildlife. Restrooms and drinking water are not available at the Preserve.

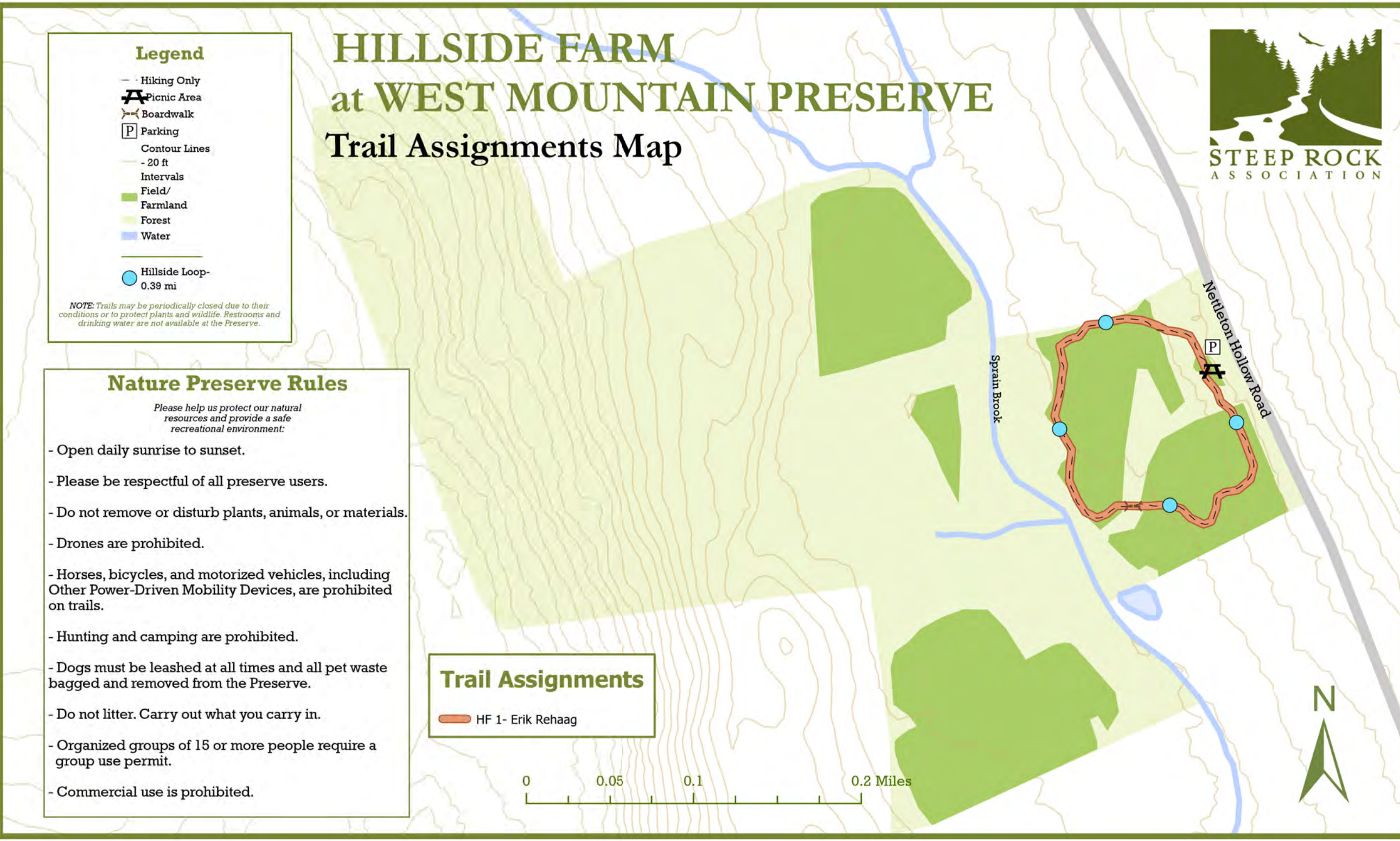
Nature Preserve Rules

Please help us protect our natural resources and provide a safe recreational environment:

- Open daily sunrise to sunset.
- Please be respectful of all preserve users.
- Do not remove or disturb plants, animals, or materials.
- Drones are prohibited.
- Horses, bicycles, and motorized vehicles, including Other Power-Driven Mobility Devices, are prohibited on trails.
- Hunting and camping are prohibited.
- Dogs must be leashed at all times and all pet waste bagged and removed from the Preserve.
- Do not litter. Carry out what you carry in.
- Organized groups of 15 or more people require a group use permit.
- Commercial use is prohibited.

Trail Assignments

- HF 1- Erik Rehaag



HIDDEN VALLEY PRESERVE

Trail Assignments Map



Legend

- Hiking Only
 - - Hiking and Equestrian
 - Hiking, Equestrian and Bicycle
 - ++ Railroad Bed
 - Contour Lines - 20 ft Intervals
 - ▭ Restricted Fishing Area
 - Water
 - Field/Farmland
 - Forest
 - Points of Interest
 - Ⓟ Parking
 - Ⓢ Seasonal Parking
 - 🚐 Horse Trailer Parking
 - 🪵 Picnic Tables
 - 🪑 Benches
 - 🚶 Pedestrian Bridges
 - 🚣 Canoe Launch
 - Van Sinderen Loop - 3.5 mi
 - Pinnacle Trail - 2.25 mi
 - Ancient Oaks Loop - 1.4 mi
 - Sabbaday Loop - 1.6 mi
 - Bee Brook Loop - 2.2 mi
 - Bronson Fields Trail - 1.2 mi
 - Half Mile Gallop - 1.25 mi
 - Pine Pass - 0.4 mi
 - Scoop Trail - 2.2 mi
 - President's Trail - 0.65 mi
 - Baldwin Knoll Trail - 0.6 mi
 - ▲ River and Rail Trail - 0.7 mi
 - ◇ Connector Trails
- NOTE: Trails may be periodically closed due to their conditions or to protect plants and wildlife. Restrooms and drinking water are not available at the Preserve. Seasonal parking areas are not maintained during the winter.*

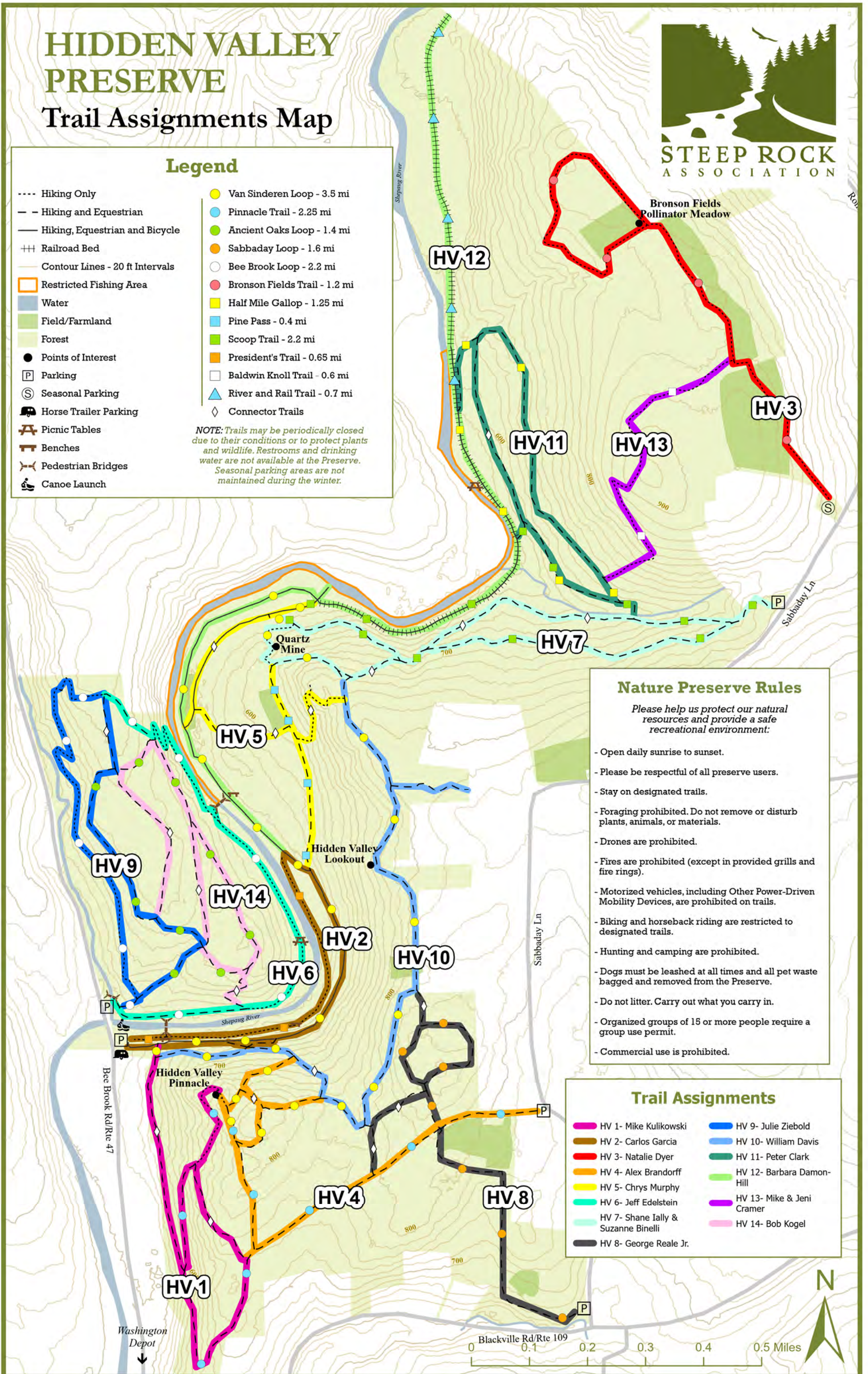
Nature Preserve Rules

Please help us protect our natural resources and provide a safe recreational environment:

- Open daily sunrise to sunset.
- Please be respectful of all preserve users.
- Stay on designated trails.
- Foraging prohibited. Do not remove or disturb plants, animals, or materials.
- Drones are prohibited.
- Fires are prohibited (except in provided grills and fire rings).
- Motorized vehicles, including Other Power-Driven Mobility Devices, are prohibited on trails.
- Biking and horseback riding are restricted to designated trails.
- Hunting and camping are prohibited.
- Dogs must be leashed at all times and all pet waste bagged and removed from the Preserve.
- Do not litter. Carry out what you carry in.
- Organized groups of 15 or more people require a group use permit.
- Commercial use is prohibited.

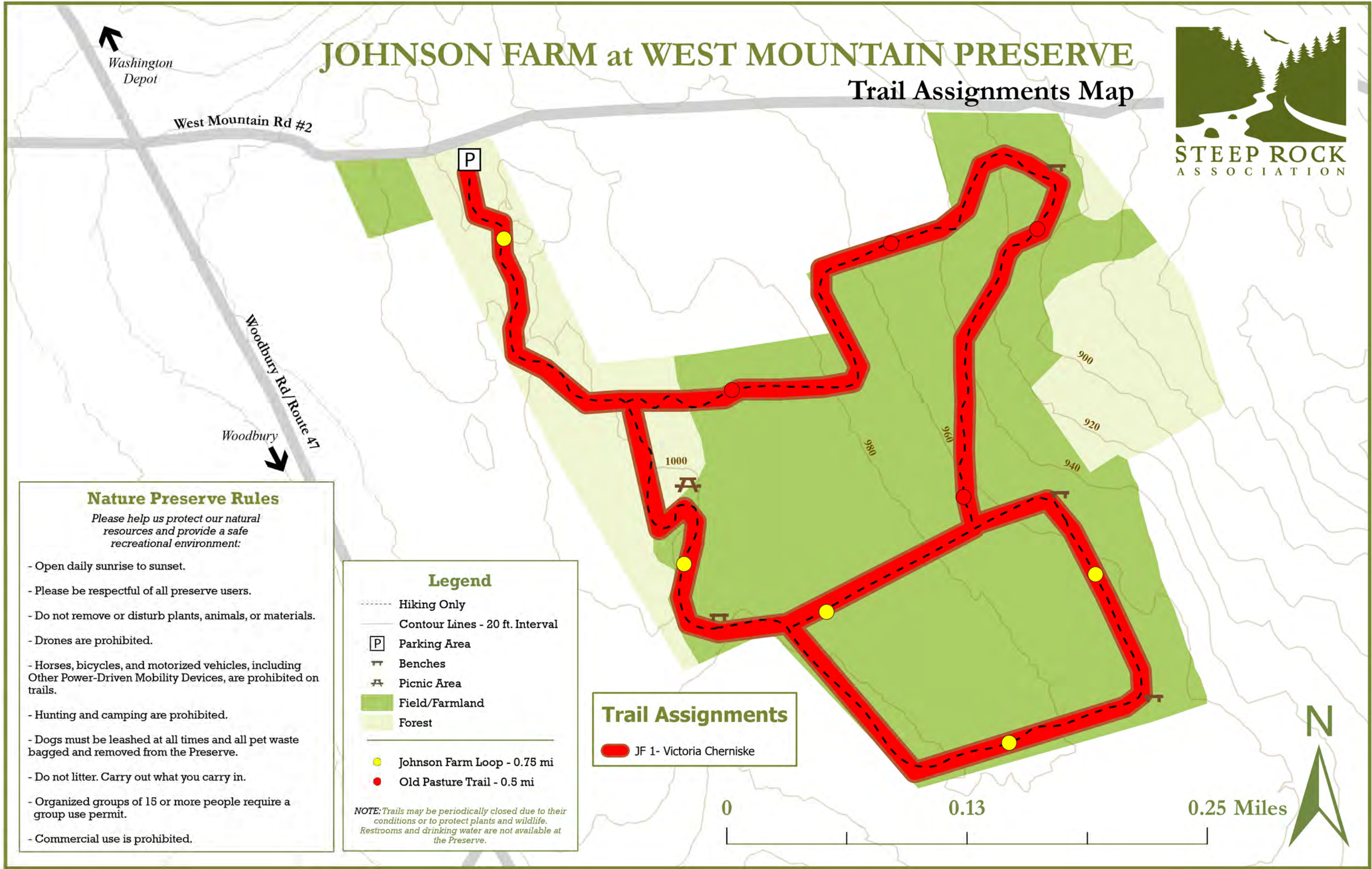
Trail Assignments

- | | |
|---------------------------------------|-----------------------------|
| ● HV 1- Mike Kulikowski | ● HV 9- Julie Ziebold |
| ● HV 2- Carlos Garcia | ● HV 10- William Davis |
| ● HV 3- Natalie Dyer | ● HV 11- Peter Clark |
| ● HV 4- Alex Brandorff | ● HV 12- Barbara Damon-Hill |
| ● HV 5- Chrys Murphy | ● HV 13- Mike & Jeni Cramer |
| ● HV 6- Jeff Edelstein | ● HV 14- Bob Kogel |
| ● HV 7- Shane Ially & Suzanne Binelli | |
| ● HV 8- George Reale Jr. | |



JOHNSON FARM at WEST MOUNTAIN PRESERVE

Trail Assignments Map



Nature Preserve Rules

Please help us protect our natural resources and provide a safe recreational environment:

- Open daily sunrise to sunset.
- Please be respectful of all preserve users.
- Do not remove or disturb plants, animals, or materials.
- Drones are prohibited.
- Horses, bicycles, and motorized vehicles, including Other Power-Driven Mobility Devices, are prohibited on trails.
- Hunting and camping are prohibited.
- Dogs must be leashed at all times and all pet waste bagged and removed from the Preserve.
- Do not litter. Carry out what you carry in.
- Organized groups of 15 or more people require a group use permit.
- Commercial use is prohibited.

Legend

- - - - - Hiking Only
- Contour Lines - 20 ft. Interval
- [P] Parking Area
- [Bench Icon] Benches
- [Picnic Area Icon] Picnic Area
- Field/Farmland
- Forest
- Johnson Farm Loop - 0.75 mi
- Old Pasture Trail - 0.5 mi

NOTE: Trails may be periodically closed due to their conditions or to protect plants and wildlife. Restrooms and drinking water are not available at the Preserve.

Trail Assignments

- JF 1- Victoria Cherniske

0 0.13 0.25 Miles

Legend

- Hiking Trails
- Private Property Subject to Public Access Easement
- Contour Lines - 20 ft Interval
- Ⓢ Seasonal Parking
- P Parking
- Points of Interest
- ⌵ Benches
- 🏠 Camp House
- ⚙ Pedestrian Bridges
- Water
- Swamp
- Field/Farmland
- Forest

- Meeker Trail - 1.6 mi
- Hay Field Loop - 1.2 mi
- Ridgeline Trail - 1.1 mi
- Waramaug's Trail - 0.75 mi
- Pinnacle Valley Trail - 0.5 mi
- Boulders Trail - 1.5 mi
- StoryWalk Trail - 0.5 mi

NOTE: Trails may be closed due to their conditions or to protect plants and wildlife. Restrooms and drinking water are not available in the Preserve. Seasonal parking areas are not maintained during the winter.

Nature Preserve Rules

Please help us protect our natural resources and provide a safe recreational environment:

- Open daily sunrise to sunset.
- Please be respectful of all preserve users.
- Do not remove or disturb plants, animals, or materials.
- Horses, bicycles, and motorized vehicles, including Other Power-Driven Mobility Devices, are prohibited on trails.
- Drones are prohibited.
- Hunting and camping are prohibited.
- Dogs must be leashed at all times and all pet waste bagged and removed from the Preserve.
- Do not litter. Carry out what you carry in.
- Organized groups of 15 or more people require a group use permit.
- Commercial use is prohibited.

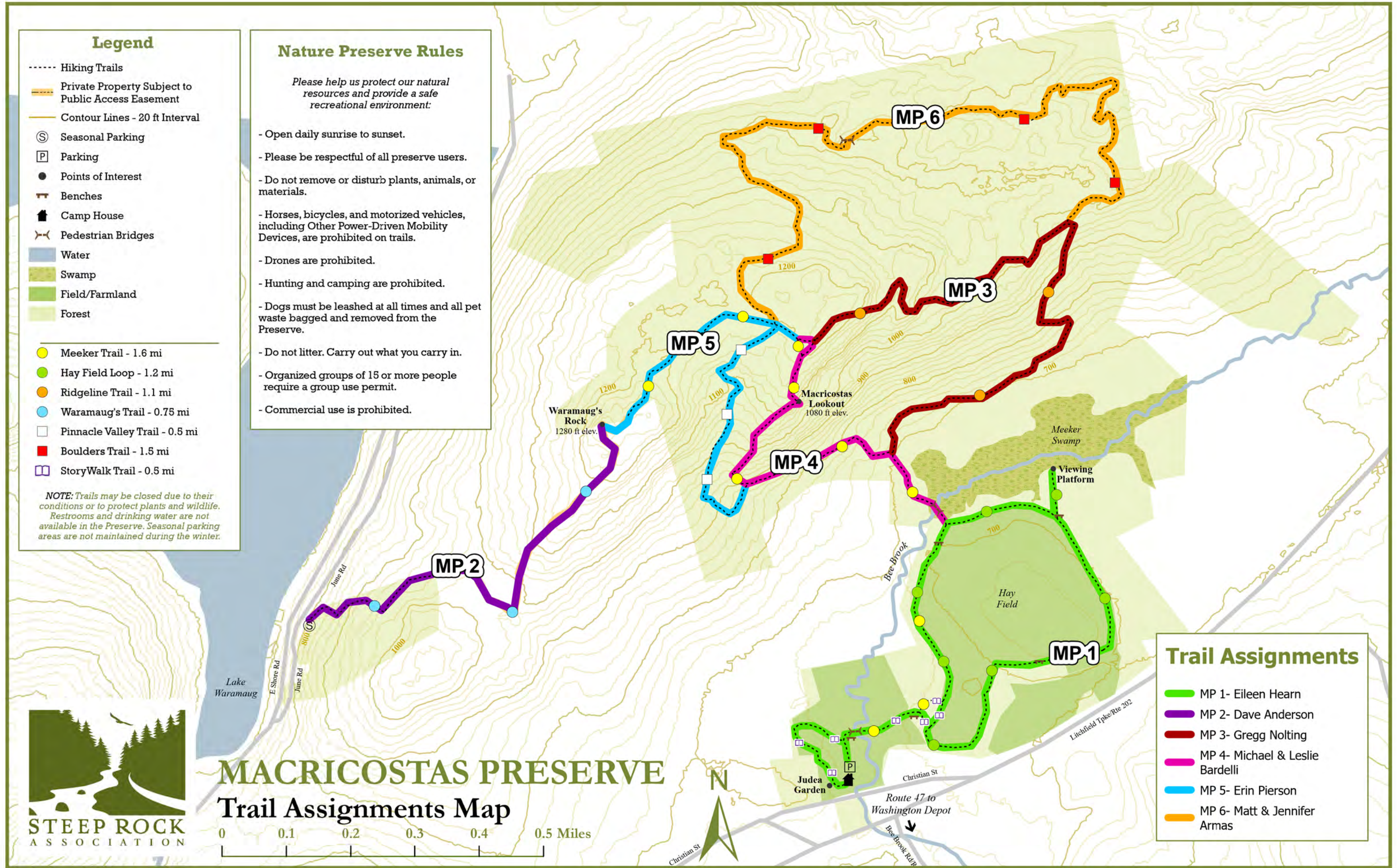
Trail Assignments

- MP 1- Eileen Hearn
- MP 2- Dave Anderson
- MP 3- Gregg Nolting
- MP 4- Michael & Leslie Bardelli
- MP 5- Erin Pierson
- MP 6- Matt & Jennifer Armas

MACRICOSTAS PRESERVE

Trail Assignments Map

0 0.1 0.2 0.3 0.4 0.5 Miles





STEEP ROCK PRESERVE

Trail Assignments Map

Legend

- | | |
|-----------------------------------|-------------------------------|
| Hiking Only | ● Steep Rock Loop - 4 mi |
| - - Hiking and Equestrian | ○ Van Ingen Trail - 0.4 mi |
| — Hiking, Equestrian, and Bicycle | ● River's Edge Loop - 3 mi |
| ++ Railroad Bed | ● Northern Loop - 1.6 mi |
| — Contour Lines - 20 ft. interval | ● Holiday House Loop - 1.3 mi |
| ▭ Restricted Fishing Area | □ Shinar Trail - 1.75 mi |
| ■ Water | ■ Brinsmade Loop - 0.75 mi |
| ■ Forest | ■ Clamshell Loop - 2.3 mi |
| ■ Field/Farmland | ■ Pinney Loop - 2.4 mi |
| ● Points of Interest | ◇ Connector Trails |
| Ⓟ Parking | |
| Ⓢ Seasonal Parking | |
| 🚐 Horse Trailer Parking | |
| 🚧 Fords | |
| ⚓ Campsites | |
| 🚽 Outhouse | |
| 🪵 Picnic Tables | |
| 🪑 Benches | |
| 🚶 Pedestrian Bridges | |
| 🚣 Canoe Launch | |

NOTE: Tunnel Rd. south of Spring Hill Rd. is closed in the winter. Trails may be periodically closed due to their conditions or to protect plants and wildlife. Restrooms and drinking water are not available at the Preserve.

Trail Assignments

- | | |
|-----------------------------------|---|
| SR 1- John Aiello | SR 7- Susan Stagg |
| SR 2- Madeline Revere | SR 8- Judie Gorra & Richard Heffernon |
| SR 3- Robert & Suzanne Ullram | SR 9- Eric Krebs |
| SR 4- Kevin Keutmann & Peni Clark | SR 10- Melissa Schipul |
| SR 5- Clare & Erik Zimmitti | SR 11- James Odonoghue |
| SR 6- Shannon Waldron | SR 12- Carolyn Bensley Muszala & Matt Muszala |

Nature Preserve Rules

Please help us protect our natural resources and provide a safe recreational environment:

- Open daily sunrise to sunset.
- Please be respectful of all preserve users.
- Stay on designated trails.
- Do not remove or disturb plants, animals, or materials.
- Fires are prohibited (except in provided grills and fire rings).
- Motorized vehicles are prohibited. Use of Other Power-Driven Mobility Devices is restricted. For approval, contact the SRA Office at (860) 868 - 9131.
- Biking and horseback riding are restricted to designated trails.
- Camping is restricted to designated camp sites. Camping is by reservation only.
- Hunting is prohibited.
- Drones are prohibited.
- Dogs must be leashed at all times and all pet waste bagged and removed from the Preserve.
- Do not litter. Carry out what you carry in.

