

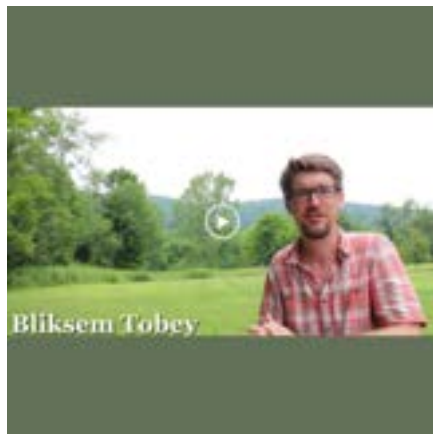


WIND, RAIN, SUN

In 2020, the winds of Tropical Storm Isaias blew down over 300 trees on Steep Rock’s trails. In 2021, Ida’s rains caused extensive flooding. In 2022, scorching heat and lack of rain stressed our fields, forests, flora, and fauna. Random events in consecutive years indicate a pattern of growing climatic instability in which we are bearing witness. The impacts threaten biological diversity, stress recreational capacity, and stretch budgetary resources. SRA has launched long-term stewardship projects to measure the impacts of a rapidly changing climate, including stream assessments, vernal pool monitoring, invasive species management, and forest studies documenting changes in structure and composition. In collaboration with State and Federal agencies, academic scientists, and our community of volunteers, the data culled from these efforts will help us create more climate resilient landscapes that benefit our ecology and future generations. On October 30, SRA is co-presenting a program on the climate crisis with the PBS show *Common Ground with Jane Whitney*, where panelists will discuss the dichotomy between what scientists say needs to be done to moderate an impending disaster and the political reality of what is possible. We invite you to join us in person or virtually. Information on the event is below. See you on our trails...

Brian Hagenbuch, Ph.D.
Executive Director

Featured Highlights



Volunteer Spotlight

Meet Bliksem Tobey! An avid hiker, Bliksem's volunteer journey started when he wanted to understand what kind of work went into maintaining our trails. Contact us if you're interested in volunteering with Steep Rock Association. [>meet Bliksem](#)



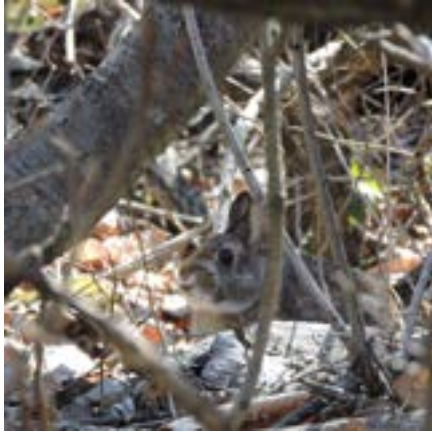
3 Peaks in 3 Weeks Challenge starts Oct. 3

Strap on your trail shoes, leash up your dog, enjoy the fresh air, and take in the beauty of fall foliage while boosting your health and wellness. Between Oct. 3 - Oct. 24, hike to the three highest peaks in Steep Rock's preserves and absorb the sights of our scenic viewsheds in autumn grandeur: the Summit at Steep Rock, the Pinnacle at Hidden Valley, and Waramaug's Rock at Macricostas. Info and registration [>more](#)



Macricostas Preserve Grows

SRA is thrilled to announce that a 15-acre parcel adjacent to Macricostas Preserve and Lake Waramaug will be protected in perpetuity thanks to the generosity and conservation awareness of Charles Eaton. The property meets a plethora of strategic preservation priorities, including the protection of water quality, core forest, wildlife corridors, and public viewshed. [>more](#)



In the Eyes of a Cottontail

Each summer, Judea Garden's interns complete a project that they share with friends and supporters at the Open Garden event in August. The project is the intern's choice, but it must be about growing vegetables, food pantries, health, or the Garden itself. As a creative writer, Skylar King chose to convey the spirit of Judea Garden and its volunteers in a story albeit from a slightly different perspective. [>more](#)



Scarecrow Builders Wanted!

Are You Feeling Creative? [Washington's Harvest Festival](#) is coming up (Sunday, 10/9) and Steep Rock is looking for help creating its scarecrow entry. We've had a hiker, a gardener, campers, and veggie chefs. What would you create to represent Steep Rock? The Washington Ambulance Association continues its domination with the favorite scarecrow at the festival. Could this be Steep Rock's year? Please email us [here](#) for more info.



Gifts That Make The World A Better Place

This giving season, honor someone you love with a gift that protects land, water and wildlife in the Litchfield Hills. A gift made in someone's name is a meaningful way to mark an occasion or to remember or honor someone special. [>more](#)



Gifts Of Appreciated Stock

Many donors prefer to make gifts of appreciated stocks, bonds or mutual funds because it can have a large impact on our mission, while maximizing potential tax benefits. If you would like to transfer your appreciated assets, contact us to access our transfer information and work directly with your broker to transfer your stocks. Email us at info@steeprockasoc.org.

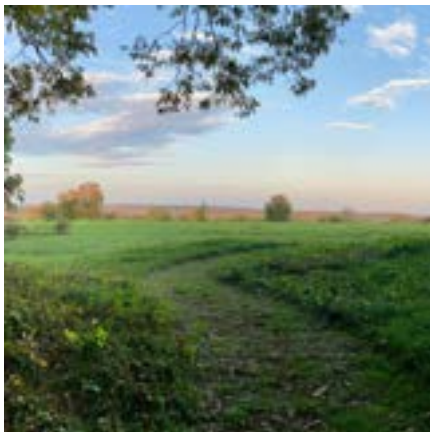
Upcoming Events



Washington Harvest Festival

Oct. 9, 12:00pm-5:00pm

Don't miss the 5th Annual Washington Harvest Festival on Sunday, October 9th, 2022! Admission is FREE. Activities and fun for kids and adults, including arts & crafts, pumpkin carving, live music, local food trucks and more. For information [>more](#)



Fall Saunters with SRA: Johnson Farm

Oct. 12, 5:00pm

Enjoy the spectacular fall colors at Johnson Farm Preserve. Join SRA's Executive Director for a walk around Johnson Farm Preserve and enjoy the sights, sounds, and smells of autumn across the landscape. Info and registration [>more](#)



Monthly Trail Work Party

Oct. 15, 9:30am-12:30pm

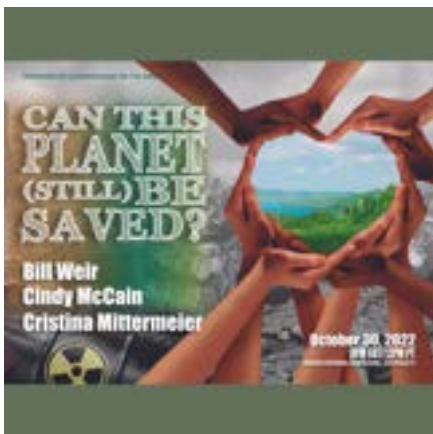
Don't miss our October Trail Work Party! Participants learn by doing, tackling new and exciting projects every month, ranging from backcountry trail construction to water and vegetation management. Wear/bring close-toed shoes, long pants, seasonally appropriate clothing, and a re-usable water bottle. Info and registration [>more](#)



Judea Garden Clean Up

Oct. 22, 9:00am-12:00pm & Oct. 23, 12:00pm-3:00pm

Join us for a fun day volunteering at Judea Garden as we wind down this year's season. Clean away plant debris, prep garden beds and plant seeds that will greet us early next spring! Info and registration [>more](#)



Common Ground with Jane Whitney:

Can This Planet (Still) Be Saved?

Oct. 30, 3:00pm

Co-presented by Steep Rock Association, don't miss this opportunity to hear activists and leaders discuss Washington DC's environmental logjam and how to spur climate action. Register for FREE using promo code CLIMATE22 [>more](#)

Honor or remember someone special by making a gift in their name.

>TRIBUTE GIFTS



Steep Rock Association

PO Box 279, Washington Depot, Connecticut 06794

860-868-9131 • info@steeprocksoc.org



[Unsubscribe](#) or [Manage Your Preferences](#)