



THE BIG PICTURE

You are part of something big. While your support is vital to Steep Rock protecting over 5,550 acres in Washington, you have also been a catalyst for conservation in the region and beyond. Your support enables Steep Rock to collaborate closely with our land trust partners in the Litchfield Hills to promote land conservation, protect critical habitats, and create effective linkages and corridors that enhance natural movement and protection for wildlife. SRA actively participates in the “Follow the Forest” initiative, an effort to protect and connect at least 50% of core forest habitats (>250 acres) from the lower Hudson Valley to the Canada border to decrease the impacts of the climate crisis, reduce habitat fragmentation, and enable a wide variety of plant and animal species the capacity to move between areas. To learn more about our collaborative efforts, watch the “[Follow the Forest](#)” video and read below how our strategic initiatives are contributing to the bigger picture of conservation. And thank you, for being part of something big. See you on our trails...

Brian Hagenbuch, Ph.D.
Executive Director

Featured Highlights



Photo by Carol Berran

A Strategic Piece to the Puzzle

We are in full swing with many projects this time of year. While SRA's preservation and stewardship projects are implemented within Washington and neighboring towns, the full impact of our work knows no bounds. Whether you're a volunteer or community scientist, grantor of property or financial supporter, take pride in the far-reaching influence we impart together, conserving functioning ecosystems, healthy wildlife populations, and interconnected open space. >[more](#)



Summer Solstice Fire & Fun

Join us on Tuesday, June 21st at [Steep Rock House](#) to celebrate the Summer Solstice! We will celebrate with a casual hike to the Macricostas Viewing Platform at 6pm, followed by light refreshments at 6:30pm around our firepit. Savor the extra hours of sunlight when the sun is actually static in the sky. For more information and to register >[more](#)



HVA's Explore-a-Thon

[Housatonic Valley Association](#) is hosting Explore-a-thon, a virtual fundraising and awareness-building event that encourages everybody (families, older adults, teens, young adults, anyone!) to get outside during the month of June and support HVA in keeping waters and lands healthy. Explore *anywhere* in the 2,000 square-mile, tri-state Housatonic Valley Watershed (which includes all Steep Rock Preserves) *any time* in June. Prizes include Patagonia and REI gear and [more](#).



Father's Day Tribute Gift

Honor your dad this **Father's Day** (June 19) with a gift that protects the natural spaces, plants and wildlife he loves. When you make a gift to Steep Rock in your dad's honor, we'll send him a note acknowledging your generosity. [>Give now in honor of your dad](#)

Upcoming Events



CT Trails Day

June 4, 12:00pm-2:00pm

Join Steep Rock Association for an exploration of Macricostas Preserve this CT Trails Day. We'll discover unique natural communities, observe an abundance of wildlife, discuss conservation stewardship practices, and enjoy scenic vistas en route to our destination - the Lookout. Details and registration info here [>more](#)



Judea Garden Weed & Wine Wednesdays

Wednesdays from June 8 - August 17, 5:30pm - 7:00pm

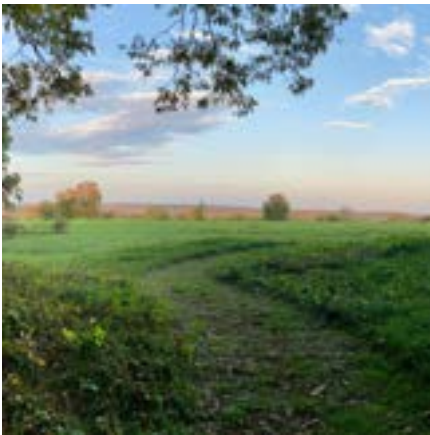
This summer, enjoy Wednesday evenings with fellow gardeners weeding the vegetables in Judea Garden, then enjoy a glass of wine on us! [>more](#)



Dragonfly & Damselfly Survey Blitz

June 11, 9:00am - 5:00pm

Join our team of "dragon hunters" for an educational and scientific day of sampling odonates. We will overview Odonata ecology, train on capture technique, and then begin the hunt to document the many different species of dragonflies and damselflies throughout SRA preserves. Details and registration info here [>more](#)



Summer Saunters with SRA

June 15, 5:00pm

Join Executive Director Brian Hagenbuch on a casual walk through Johnson Farm. The 52-acre Johnson Farm Preserve showcases several active agricultural fields, as well as a mix of sunny meadows and shady, open forests. 1.25 miles of hiking trails crisscross this landscape, offering breathtaking hillside views. Details and registration info here [>more](#)



Monthly Trail Work Party

June 18, 9:30am - 12:00pm

Join Steep Rock Association's Monthly Trail Work Party! The Monthly Trail Work Party meets at 9:30 a.m. the third Saturday of every month from April through November.

Details and registration info here [>more](#)



Invasive Task Force Training

June 24, 5:00pm - 7:00pm

Help us control invasive species in our nature preserves! Invasive plants are non-native species that overtake an area, often outcompeting their native counterparts and reducing biodiversity within the environment. As part of this training program, you will learn how to identify, map, and control invasive plant and insect species. Details and registration info here [>more](#)

You can support all our activities by donating to Steep Rock via credit card, stock, planned giving, crypto, or your Donor Advised Fund. Thank you!

Popular Ways To Give



Steep Rock Association

PO Box 279, Washington Depot, Connecticut 06794

860-868-9131 • info@steeprocksoc.org



[Unsubscribe](#) or [Manage Your Preferences](#)